

JUNIOR 4 P.ONE BASIC 4

Straightening
machines &
4-sided planers



FUTURA

Top start for reliability and precision

Metalstar2000

FUTURA
Machines & Control
for Woodworking

The FUTURA brand, synonymous with experience, continuous research and innovation in the field of woodworking machines, offers the market reliable technological solutions that guarantee continuity and minimum operating costs.

Every FUTURA machine is totally Made in Italy

The design and manufacture of each component are all carried out in Italy in the Metalstar 2000 plants, where the long experience and skill of specialized professionals transfer quality and reliability on every single machine.

Thanks to the JUNIOR and P.ONE BASIC models, planing has never been easier!

Finished piece in a single step

Maximum compactness
for a new space-saving design concept

Machinery meets all EU requirements

JUNIOR 4

**Smallest but ultra-modern
in mechanics concept.**

Equipped with Poly-V belts to ensure maximum motor efficiency, air blowers for better smoothness of the wood that can be further helped by a drop by drop system that mixes air and oil for resinous and wet woods. The 4-sided planer Junior model ensures a perfect straightening of the wood without vibrations.



P.ONE BASIC 4

**Extremely useful in straightening and
planing operations required on wood
purchased from carpentries.**

When the wood is crooked and/or rough, the machine makes it a perfect square and therefore suitable for subsequent production processes. It meets all the safety requirements of the European Union.



JUNIOR 4 P.ONE BASIC 4

General Characteristics

From sheet metal cutting to the finished product: all of this is
Made in Metalstar 2000

COMPACT DRIVE SYSTEM

Thanks to the reduced thickness, these belts are very flexible and can be suitable even for heavy-duty performances. Our pulleys are designed and manufactured with the utmost precision for a perfect fit with the belt grooves. An optimal & highly silent synergy that does not transmit vibrations.



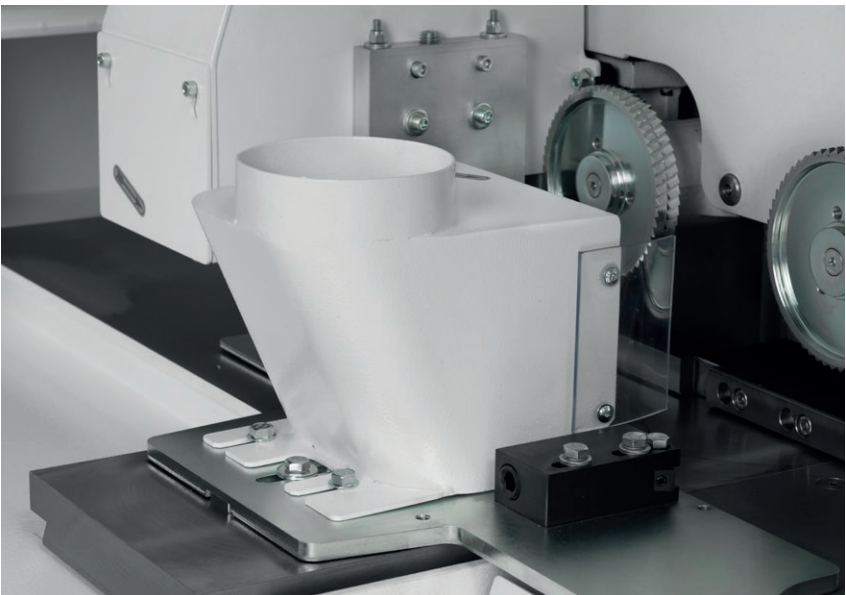
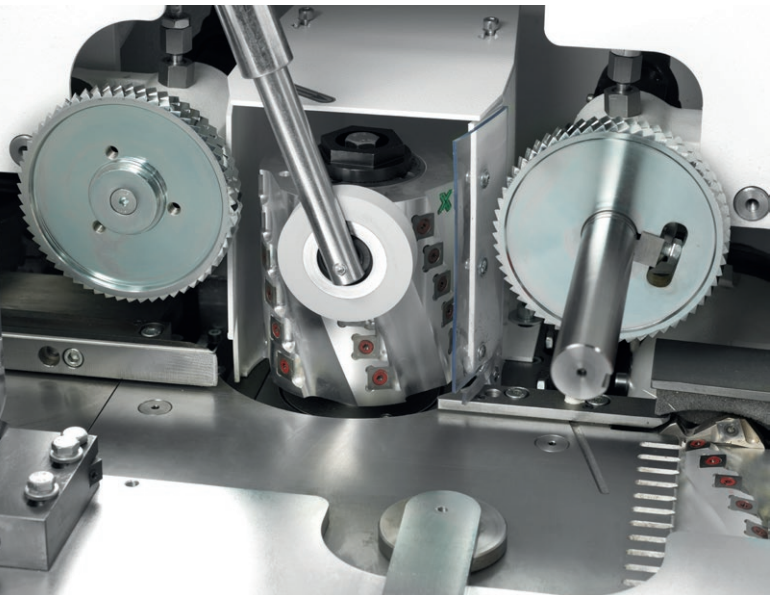
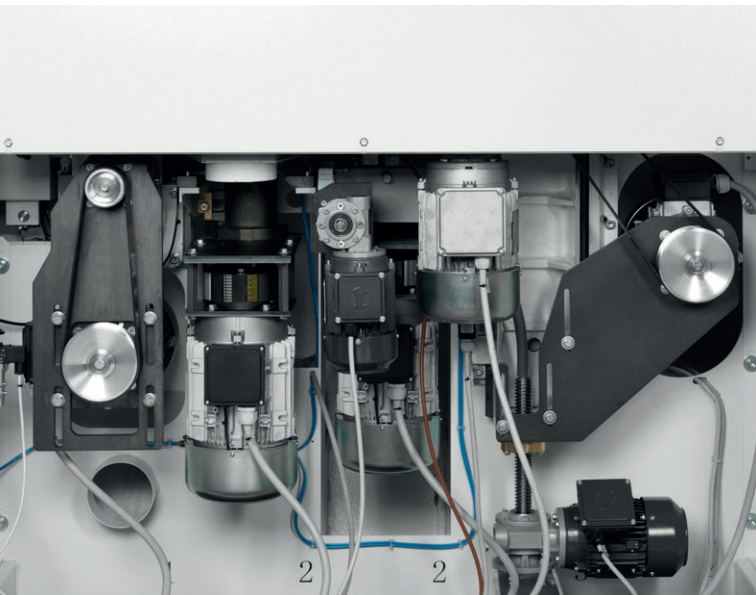
LESS DUST IS EQUIVALENT TO ENERGY SAVING

Suction system designed for a long-lasting machine. Hoods have been designed for a constant and easy wood chips flow, thus significantly reducing power consumption.



Low power-consumption Solutions

The drive is made up of a motor-gearbox to make the most of the motor's kW. A power transmission that is synonymous with innovative, power-saving solutions.



INDEPENDENT MOTORS

Each operating unit is equipped with its own motor. Possibility of installing a motor that adapts to the machining operations required.

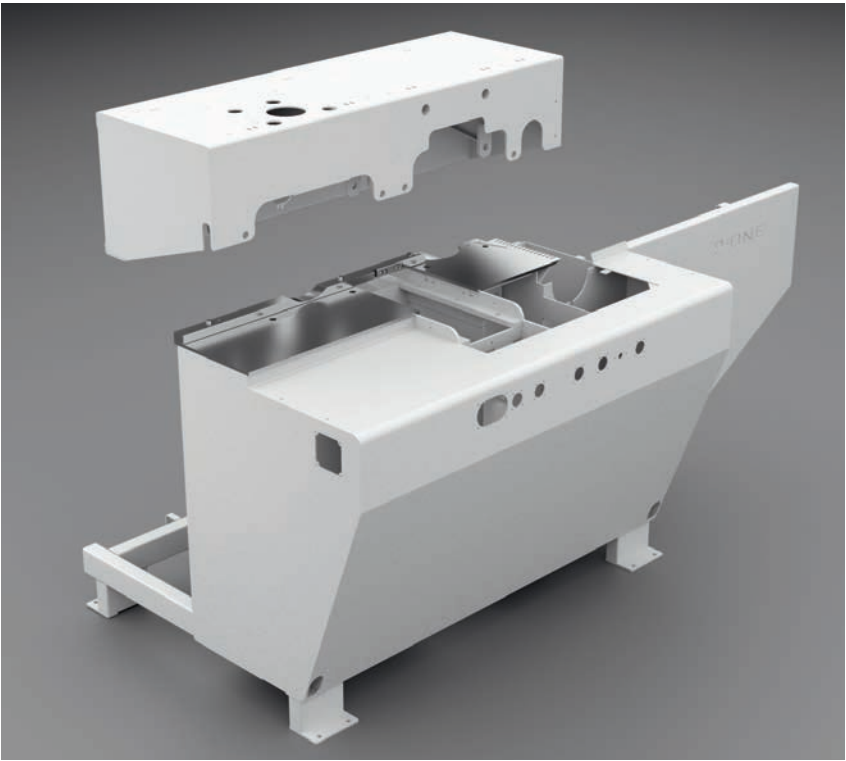


AIR BLOWERS AND ATOMISATION OF THE WORK TABLE

Even for the more problematic categories of wood pieces correct handling will be ensured. The system can be integrated with oil-air mixed atomisation to further improve wood pieces conveying.

MONOBLOC MACHINE BED

Machine bed and top beam designed to ensure high rigidity and stability of the machinery. Both are built with a monobloc iron structure, stabilized, sandblasted and painted with epoxy-polyester powder resistant to impact, light reflections and weather for durability.



JUNIOR 4

The best answer for customers looking for quality at an affordable price



WORKING FEATURES

The maximum working sections are 180mm wide and 130mm high.
The minimum working sections are 25mm wide (15mm opt) and 8mm high.
Thanks to the compact design, the machine can process single pieces of 270mm length.

SPACE SAVING

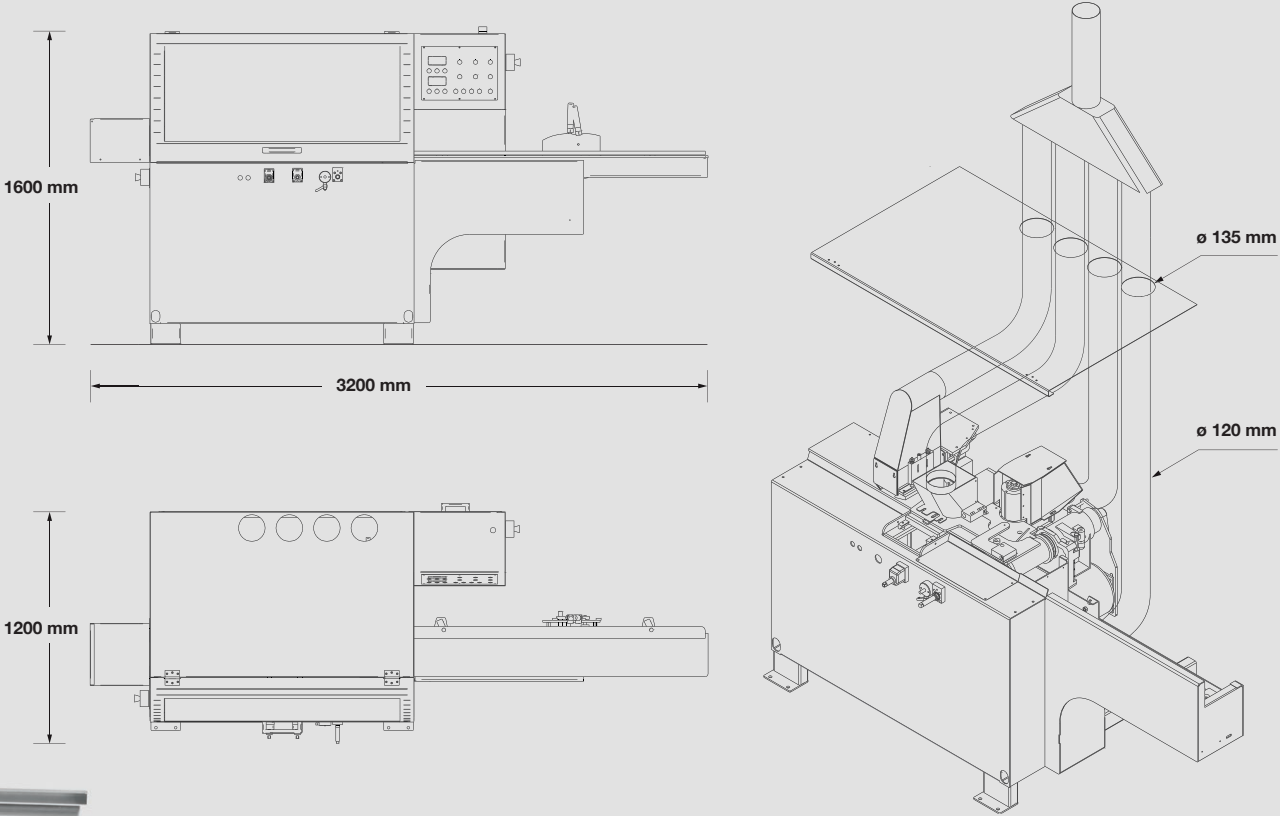
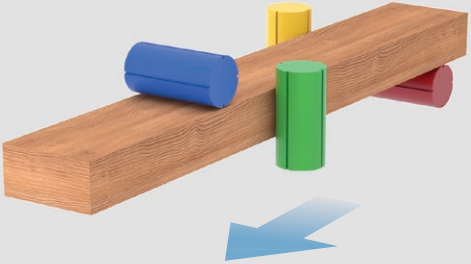
Innovation and its compactness are the characteristics that make it unique.
JUNIOR can be moved by pallet truck, allowing easy handling within the factory.

JUNIOR 4



- 1 Powered rise and fall
- 2 ON-OFF Pneumatic preplaner roller
- 3 Idle roller
- 4 Oil pump to lubricate the work table

FOUR SIDED PLANNER



Technical data

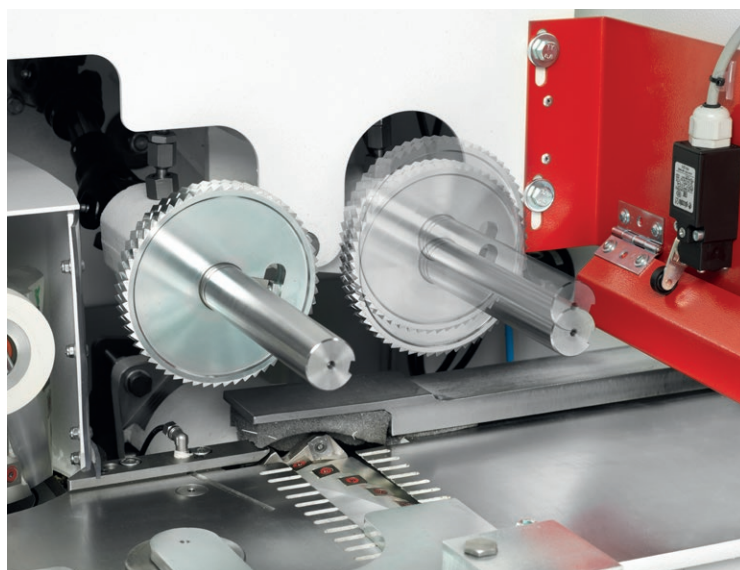
Planer spindle motor power (1st unit)	kW 4 (HP 5,5)
Right spindle motor power (2nd unit)	kW 4 (HP 5,5)
Left spindle motor power (3rd unit)	kW 4 (HP 5,5)
Upper horizontal motor power (4th unit)	kW 4 (HP 5,5)
Feed motor power	kW 1,5/1,1 (HP 2/1,4)
Maximum working width (with tool diameter 100 mm)	180 mm
Minimum working width (with tool diameter 100 mm)	25 mm
Maximum working height (with tool diameter 100 mm)	130 mm
Minimum working height (with tool diameter 100 mm)	8 mm
Minimum workpiece length (single piece)	270 mm
Spindle speed	6000 RPM
Shaft size	35 mm
Tool dimensions for horizontal spindles	100 x 190 mm
Tool dimensions for vertical spindles	100 x 130 mm
Infeed table	1700mm
Manual pump for table lubrication	standard

P.ONE BASIC 4

Our goal is to respond to the needs of our customers by ensuring top-quality technologies.

2-AXIS PLC

Touchscreen PLC to store recipes. Icons for saving, opening and deleting recipes are easy and intuitive, very similar to that of PCs. Automatic axis positioning and start of spindle motors at the touch of a button.



PNEUMATIC SYSTEM

Perfect straightening requires synergy of many mechanical factors combined with electronics and pneumatics. The P.ONE Basic is built with each of these elements in mind.

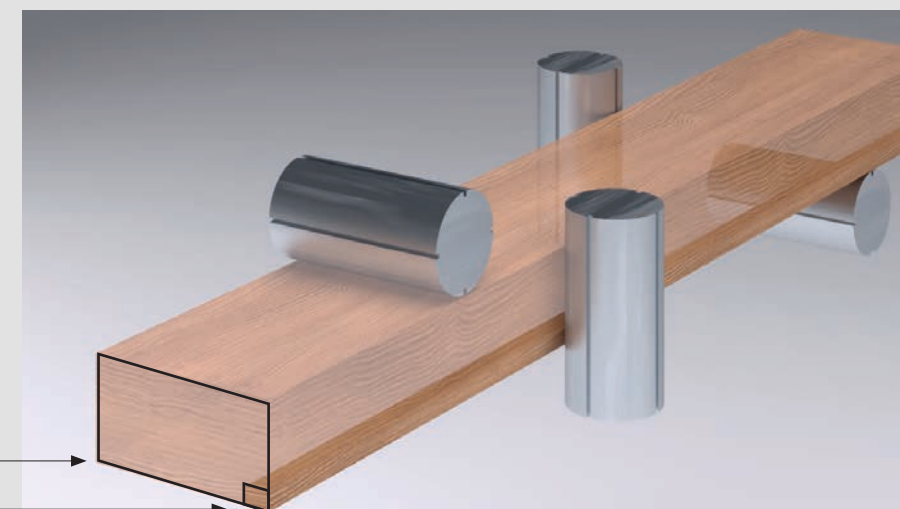
The drive units are kept under pressure by pneumatic pistons and the inlet roller is designed with a pneumatic ON-OFF exclusion so that from the operator's position it is possible to decide whether the machine should straighten or plan. The latter can be requested with automatic exclusion.

WORKING SKILLS

The maximum working sections are 230mm wide and 130mm high.
The minimum working sections are 25mm wide (15mm opt) and 8mm high.

max 230 x 130 mm

min 25* x 8 mm (* 15mm opt)

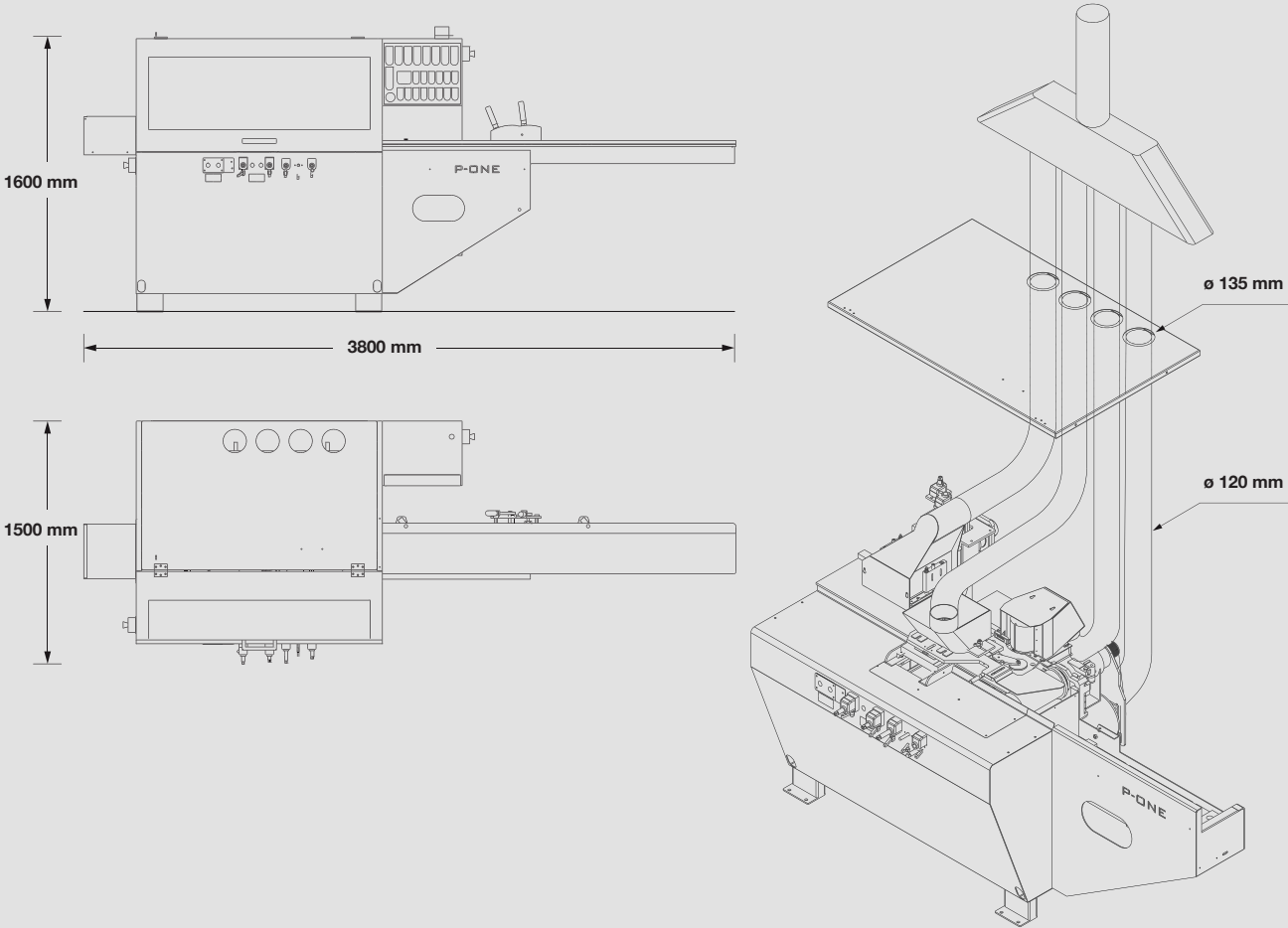
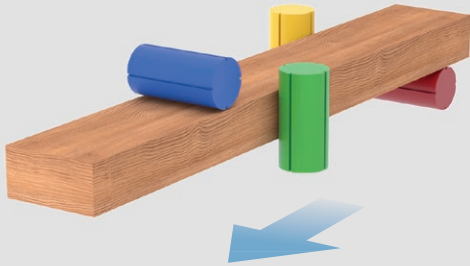


P.ONE BASIC 4



- 1 Powered rise and fall with electronic counter
- 2 Pre-planer roller with pneumatic exclusion
- 3 Idle roller
- 4 Left vertical spindle electronic adjustment complete with digital position indicator

FOUR SIDED PLANER



Technical data

Maximum working width (with tool diameter 125 mm)	230 mm
Minimum working width (with tool diameter 125 mm)	25 mm
Maximum working height (with tool diameter 125 mm)	130 mm
Minimum working height (with tool diameter 125 mm)	8 mm
Feed speed	7/14 m/min
Spindle speed	6000 RPM
Shaft size	ø 40 mm
Tool diameter and length of horizontal spindles	ø 125 - 230 mm
Tool diameter and length of vertical spindles	ø 125 - 130 mm
Infeed table	2300 mm
Planer spindle motor power	5,5 HP (4 kW)
Right spindle motor power	5,5 HP (4 kW)
Left spindle motor power	5,5 HP (4 kW)
Upper horizontal motor power	5,5 HP (4 kW)
Feed motor power	1,4/2 HP (1,1/1,5 kW)
Manual pump for table lubrication	standard
Motors direct start via pushbuttons	standard



Metalstar2000

Metalstar 2000 S.r.l.

Via San Salvatore, 21
47924 Rimini (RN) - Italy
Tel. +39 0541 633022 - Fax +39 0541 731202
E-mail: commerciale@futura-woodmac.com
www.futura-woodmac.com

For demonstration purposes, some photos illustrate machines complete with accessories.
Metalstar 2000 reserves the right to change any specifications without giving prior notice.