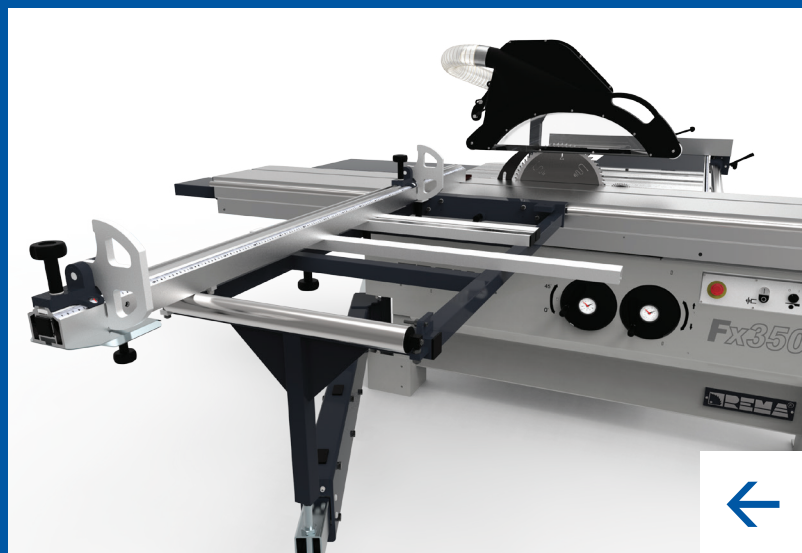




new 2017

# Fx350



# Fx350

**Fx350 is a new sliding table panel saw made by REMA S.A. It fulfills all the basic functions necessary for proper cutting of wood-based boards.**

The saw is equipped with a main cutting unit for circular saw blades with diameters from Ø 300 to Ø 350 mm providing a maximum sawing height of 115 mm along with a cutter. The standard cutting width with the rip fence is

Functional crosscut fence table (1300 mm in length and 600 mm in width) with Ø 50 mm steel roller and adjustable 1800 mm crosscut fence with up to 3,200 mm extension.



Strong crosscut table support assisted by 6 rollers with height adjust function.



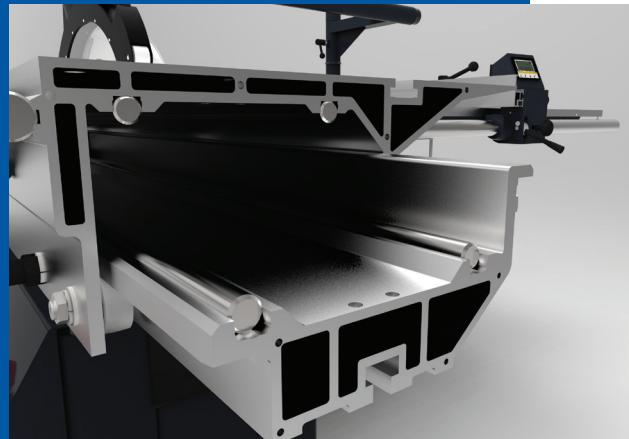
Cast iron rip fence corps with quick clamping mechanism and micro regulation, for sawing width up to 1300 mm.







Sliding table length = 3010 mm as a standard. Upper guard adjusts to the height of the workpiece to ensure safety of operator. The guard is mounted on the pipe that serves as a sawdust discharge.



Cast iron cradle with adjustable height and sawing angle. Main saw blade diameter 350 mm, scoring unit blade diameter 120 – 125 mm.

Cutting unit set on cast iron arches with 6 kW main motor engine and 0,75 kW scoring unit engine.



Electronic reader of the rip fence stopper with absolute memory function and 0.1 mm accuracy (optional).



Panel saw with short sliding table L – 1900mm.



416 mm wide multi-chamber aluminium profile with 4 steel rollers and 12 eccentric rollers.



There is also available Fx315 panel saw with a maximal saw blade diameter Ø 315 and main motor 3,9 kW as a standard.



Electronic reader of the crosscut fence stopper with absolute memory function and 0.1 mm accuracy (optional).

Machine diameters

Length	2400 mm with sliding table 1900 / 3000 mm with sliding table 2500 / 3500 mm with sliding table 3010
Width	3600 mm + extension (4900 mm)
Maximal height	1310 mm
Extraction outlet diameter	Ø 80 mm – Fx350 / Ø 60 mm – Fx315
Extraction outlet diameter – bottom	Ø 125 mm
Air requested (bottom extraction system)	900 m³/h
Air requested (top extraction system)	360 m³/h
Suction air speed	28 m/s
Weight	800 kg

Cutting parameters

Main saw blade diameter	Fx350 Ø 300 – Ø 350 mm / Fx315 Ø 300 – Ø 315 mm	
Sawing height depending on saw blade and angle	0°	45°
→ Ø 300	0 – 90 mm	65 mm
→ Ø 315	0 – 97,5 mm	69 mm
→ Ø 350	3 – 115 mm	80 mm
Saw blade tilting	0 – 45°	

Cutting length with a crosscut fence

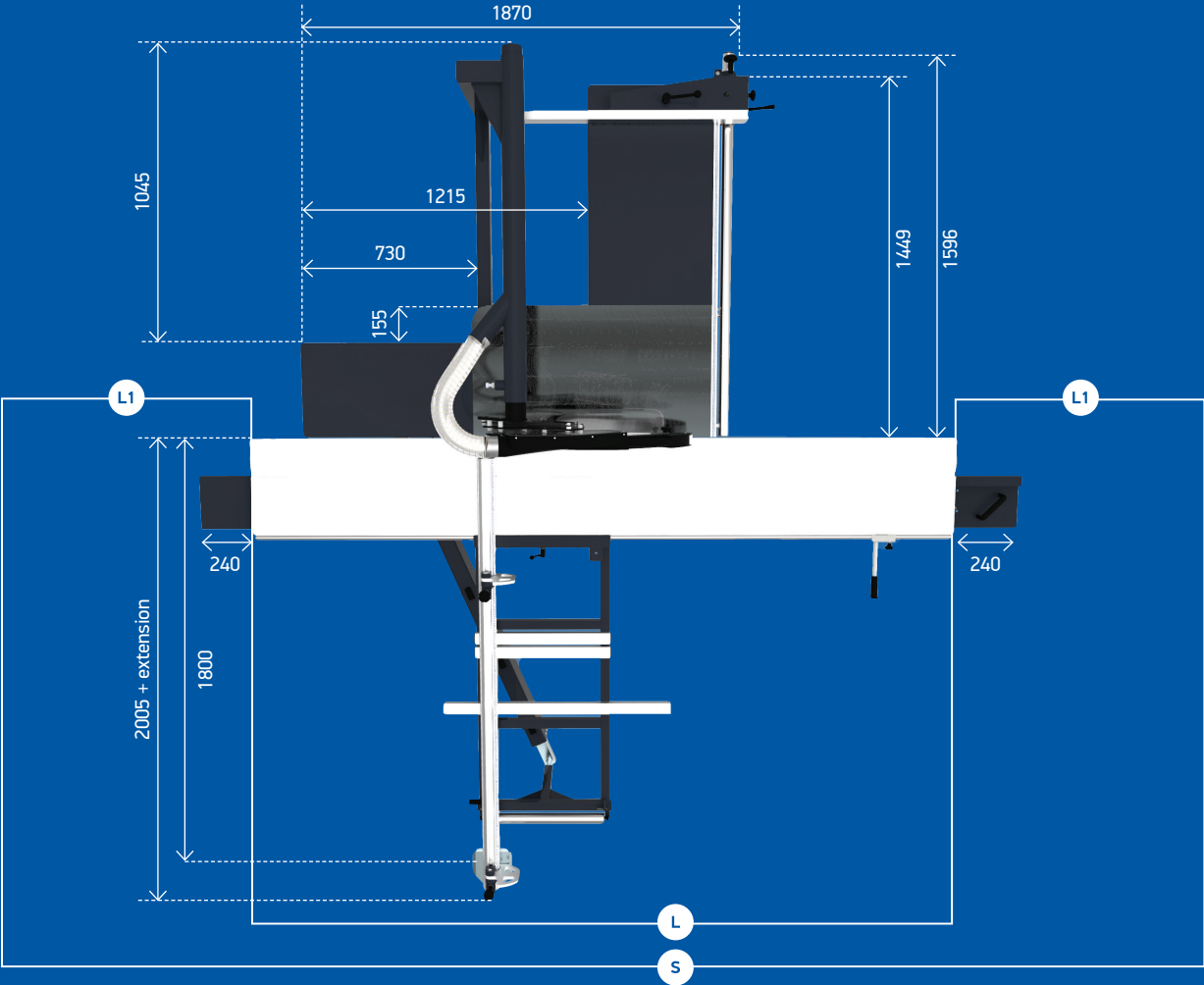
Sliding table 190	1900 mm
Sliding table 250	2500 mm
Sliding table 300	3000 mm

Cutting width with the crosscut fence

Stopper on the crosscut fence	60 – 1780 mm
Extension	1905 – 3200 mm
Stopper with electronic reader	60 – 1630 mm
Maximal distance of the rip fence	1300 mm

Drives parameters

Main motor power	6 kW – Fx350 standard / 3,9 kW – Fx315 standard
Scoring unit motor power	0,75 kW
Scoring unit saw diameter	Ø 120 – Ø 125 mm
Scoring unit rotation speed	8500 rpm
Main spindle tip diameter	Ø 30 mm
Scoring unit spindle diameter	Ø 20 mm
Main spindle rotation speeds	4500 rpm



\* Machine specifications are subject to change. In case of doubt, the parameters indicated in the individual offer are binding.

Fx350 and Fx315 sliding table options

Options	L	L1	S	Cutting length with crosscut fence
190	1900	1124	4148	1900
250	2500	1436	5372	2500
300	3010	1709	6428	3000

Working dimensions

Sliding table diameters	Sliding table 190 – 416 × 1900 [width × length] Sliding table 250 – 416 × 2500 [width × length] Sliding table 301 – 416 × 3010 [width × length]
Iron cast table diameters	554 × 1008 mm
Working height	885 mm





**REMA S.A.**

ul. Bolesława Chrobrego 5

11-440 Reszel

tel. +48 89 755 01 19

sale@rema-sa.pl

**rema-sa.pl**